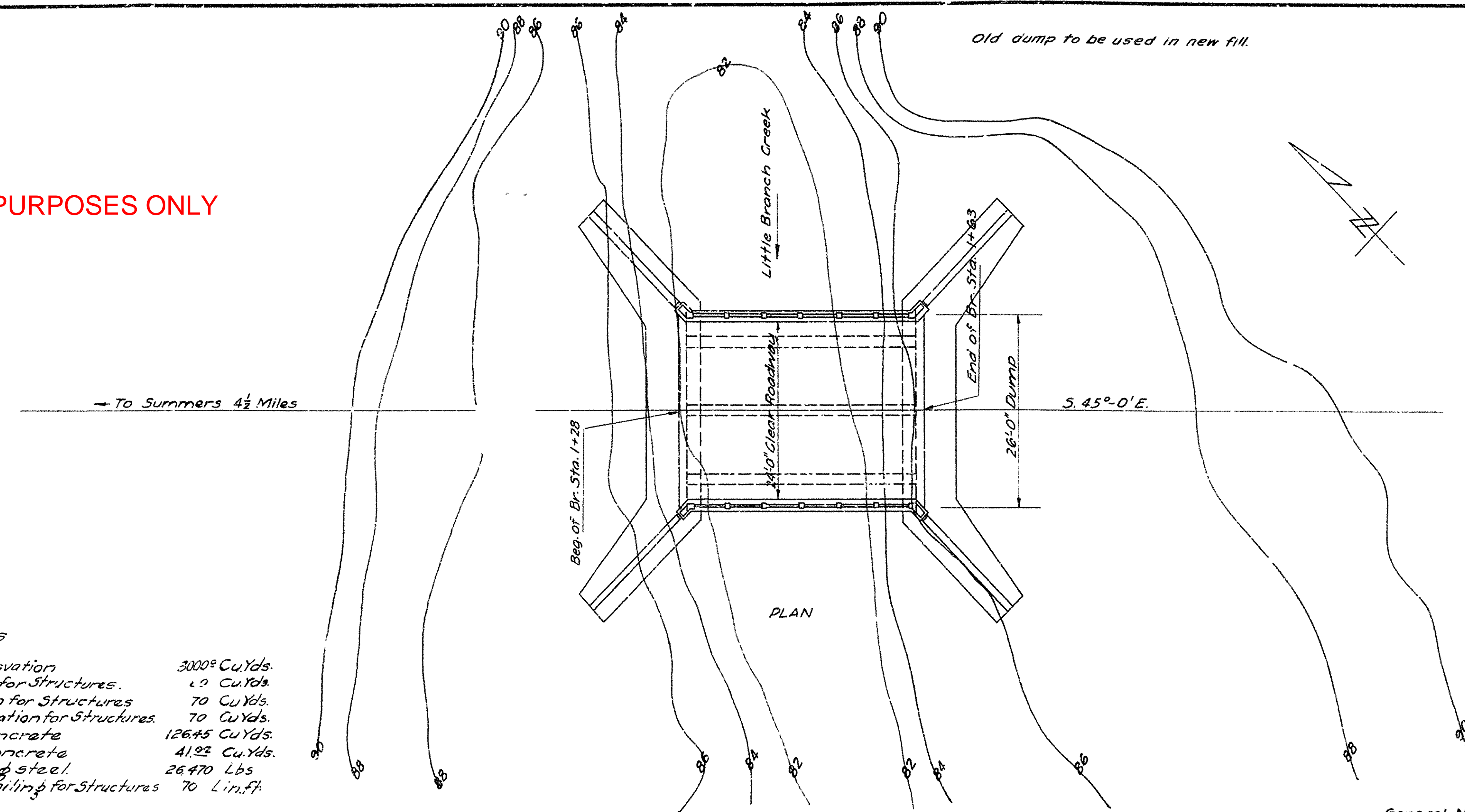


FISCAL YEAR	Job No	SHEET No	TOTAL SHEETS
1930	4157	1	3

FOR INFORMATIONAL PURPOSES ONLY

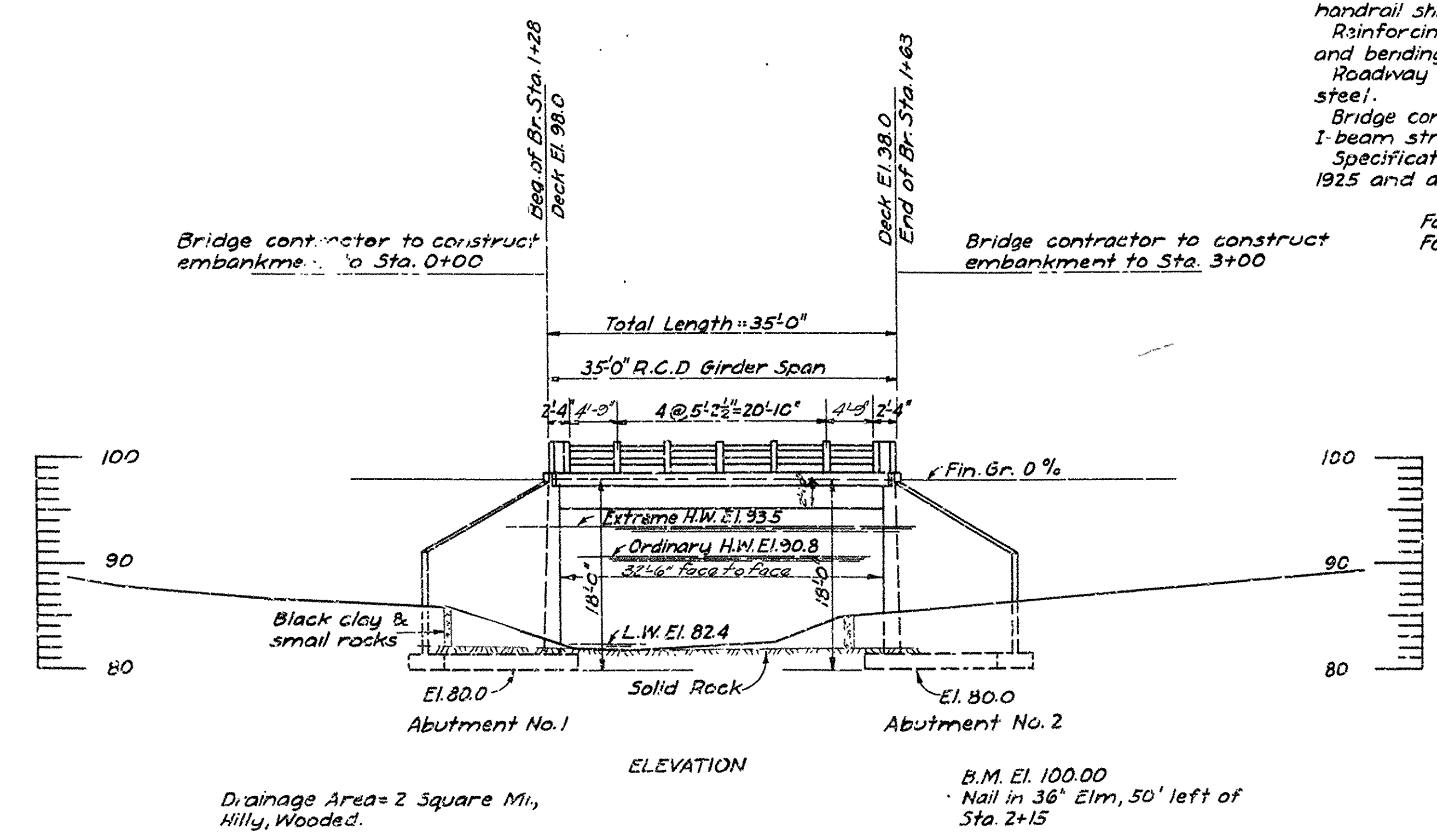


QUANTITIES

Item No. 12	Common Excavation	3000 <sup>00</sup> Cu.Yds.
Item No. 13	Dry Excavation for Structures	10 Cu.Yds.
Item No. 13	Wet Excavation for Structures	70 Cu.Yds.
Item No. 13	Solid Rock Excavation for Structures	70 Cu.Yds.
Item No. 54	Class "A" Concrete	126.45 Cu.Yds.
Item No. 54	Class "S" Concrete	41.22 Cu.Yds.
Item No. 55	Reinforcing steel	26,470 Lbs.
Item No. 74	Concrete Railing for Structures	70 Lin.ft.

**General Notes**  
All exposed corners to have  $\frac{3}{4}$ " chamfer unless otherwise noted.  
All concrete in substructure to be Class "A", and is to be poured in the dry.  
All concrete in superstructure, except handrailing, to be Class "S". Precast concrete handrail shall be 1:1:2 mix; maximum aggregate shall be  $\frac{3}{4}$ ". Rail posts shall be Class "S".  
Reinforcing steel to be deformed bars of structural or intermediate grade. Shop lists and bending diagrams must be submitted and approved before fabrication is begun.  
Roadway drains and expansion felt to be paid for at unit price bid for reinforcing steel.  
Bridge contractor to construct embankment at bridge ends, and to remove existing I-beam structure situated approximately 40 feet upstream.  
Specifications: Arkansas Standard Road and Bridge Specifications, adopted May 30th, 1925 and as revised.

For superstructure details see Drwg. No. 2314.  
For substructure details see Drwg. No. 2978.



LAYOUT OF BRIDGE  
OVER  
LITTLE BRANCH CREEK  
SUMMERS-DUTCH MILLS ROAD  
WASHINGTON COUNTY

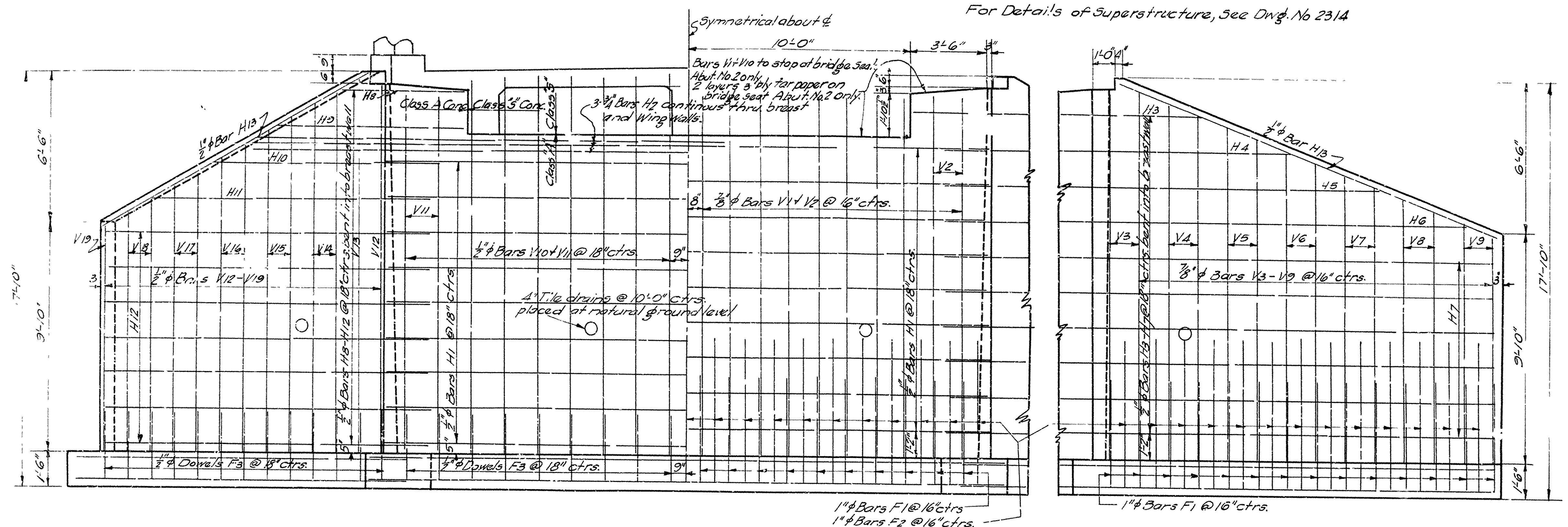
ROUTE 99 SEC. 1  
ARKANSAS STATE HIGHWAY COMMISSION  
LITTLE ROCK, ARK.

Drawn By: *W.B. Larver* Date: 12-9-30  
Traced By: *W.B. Larver* Date: 12-10-30  
Checked By: \_\_\_\_\_ Date: \_\_\_\_\_  
BRIDGE NO. 1649 DRAWING NO. 2977

W.B. Larver  
BRIDGE ENGINEER



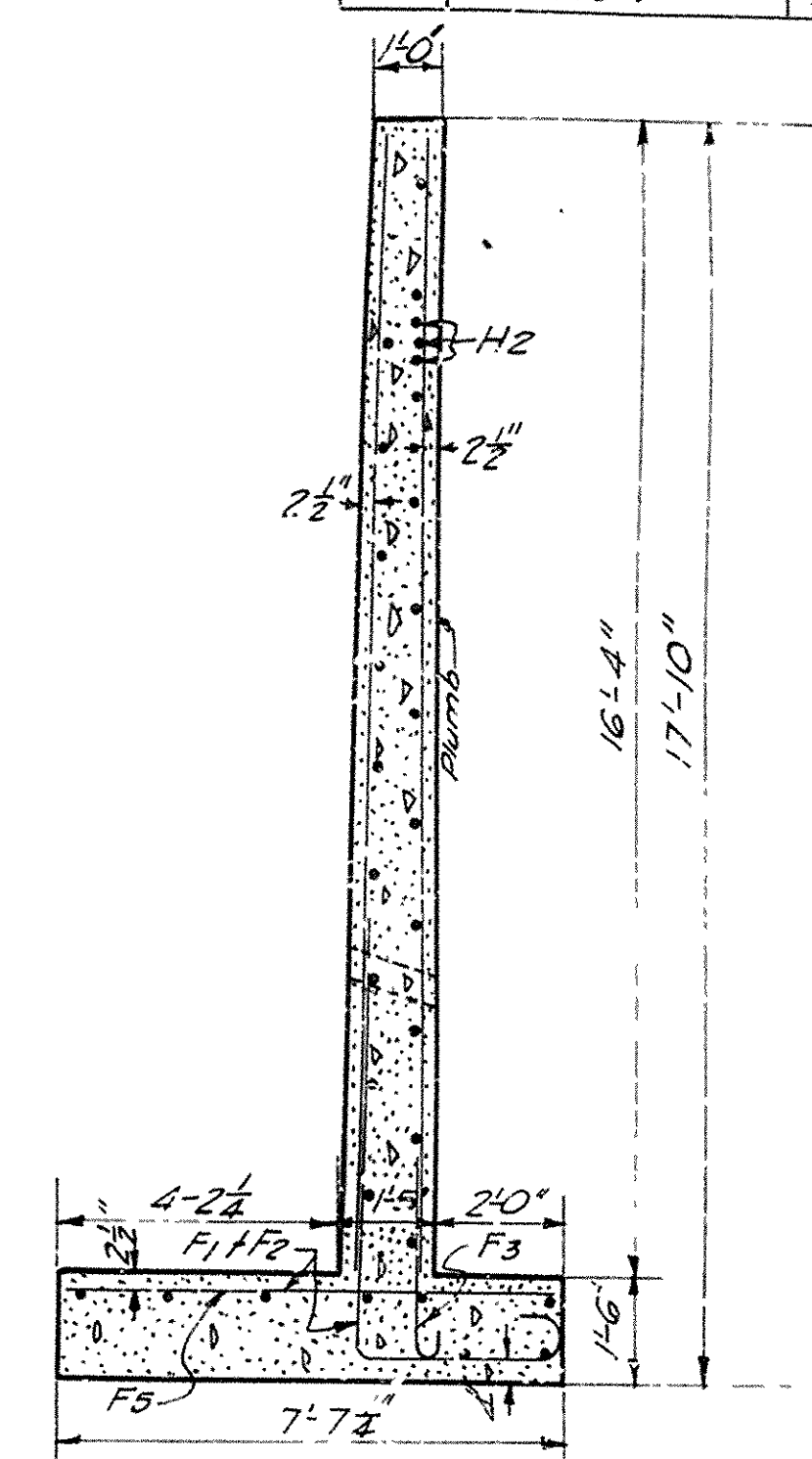
FISCAL YEAR	Job No.	SHEET NO.	TOTAL SHEETS
1930	4157	2	3



HALF ELEVATION  
Showing Front Face Steel

HALF ELEVATION OF BREAST  
Showing Back Face Steel

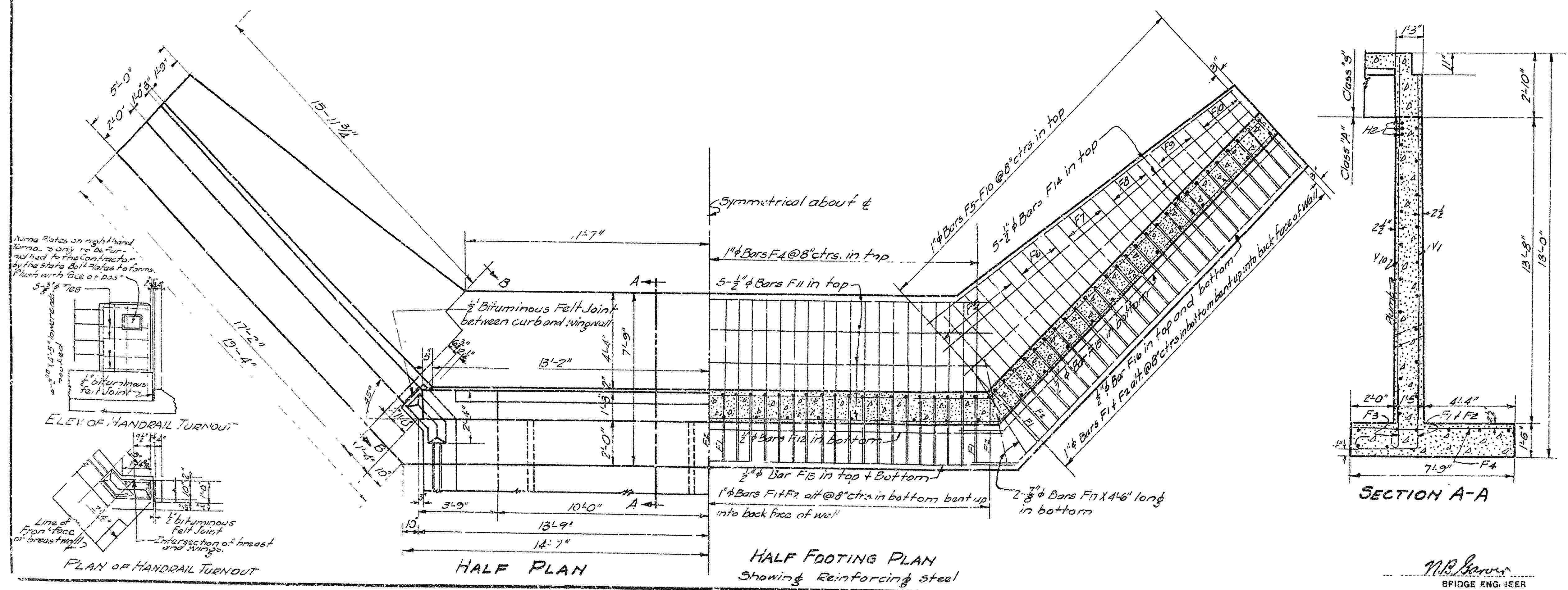
ELEVATION OF WING  
Showing Back Face Steel



SECTION B-B

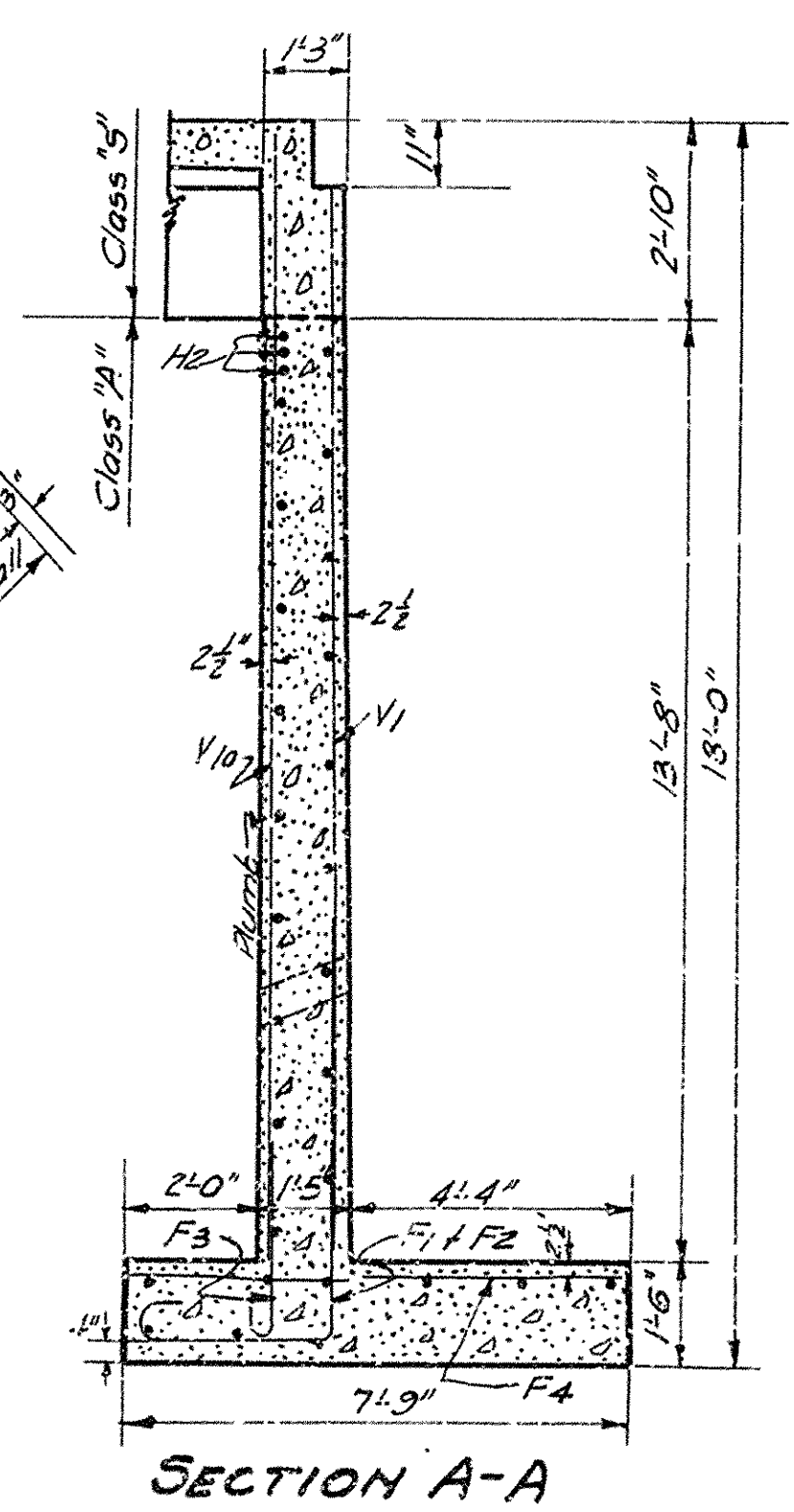
FOR INFORMATIONAL PURPOSES ONLY

MARK	SIZE	LENGTH	Bending Diagram		
			A		
F1	1"φ	8'-2"	4'-6"		
F2	1"φ	9'-11"	6'-3"		
F3	1/2"φ	3'-4"			
			A	B	
F15	1/2"φ	20'-3"	18'-3"	2'-0"	
F16	"	20'-9"	18'-9"	2'-0"	
H3	"	7'-9"	4'-3"	3'-6"	
H4	"	10'-6"	8'-6"	2'-0"	
H5	"	14'-6"	12'-6"	2'-0"	
H6	"	18'-6"	16'-6"	2'-0"	
H7	"	19'-6"	17'-8"	2'-0"	
H8	"	6'-3"	2'-9"	3'-6"	
H9	"	10'-3"	6'-9"	3'-6"	
H10	"	12'-9"	10'-9"	7'-0"	
H11	"	17'-0"	15'-0"	2'-0"	
H12	3/4"φ	20'-2"	18'-2"	2'-0"	
H2	3/4"φ	43'-3"			



HALF PLAN

HALF FOOTING PLAN  
Showing Reinforcing steel



SECTION A-A

DETAILS OF ABUTMENTS  
FOR BRIDGE OVER LITTLE BRANCH CREEK  
SUMMERS-DUTCH MILLS ROAD  
WASHINGTON CO.  
ROUTE SEC.  
ARKANSAS STATE HIGHWAY COMMISSION  
LITTLE ROCK, ARK.  
Drawn By: *W.E.B.* Date: 12-8-30  
Traced By: *W.A.W.* Date: 12-12-30  
Checked By: \_\_\_\_\_ Date: \_\_\_\_\_  
Scale: 3/8" = 1'-0"  
BRIDGE NO. 1649 DRAWING NO. 2978